

## Perform'eco' to EXPAND

**manufacturing site** – due to the great response Perform'eco' has received following the release of the new product ranges in January of 2007, the company was faced with extended lead times due to massive demand, mainly fuelled by repeat business and recommendations. The manufacturing facility will be increased by 3000 square feet from 1<sup>st</sup> June, work is already underway securing additional manufacturing equipment and recruiting the personnel required.

## Website launched

 – Perform'eco'

website was launched in March and is proving to be a great success, demonstrating the full product range which includes PDF sectional drawing of the products, the site has been well received by developers and architects packed with information, including case studies of recently completed projects and photo galleries providing inspiration.



[www.performeco.co.uk](http://www.performeco.co.uk)

The only place to visit for timber windows doors & conservatories



New Unit H1

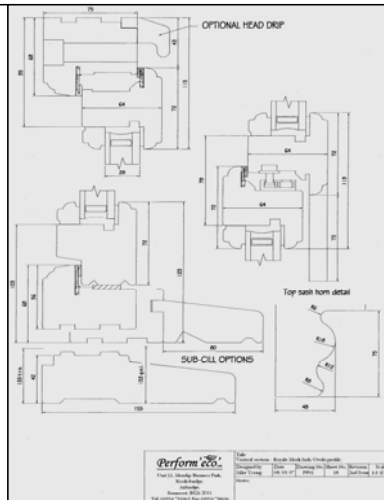
Existing units J1 & J2

## Royale – Now available!

The Perform'eco' Royale (mock sash window) design has now been completed, the window range is available for manufacture from May, and is based on the popular Classic range of windows, having a 75mm frame depth and being fully sashed to create balanced sight lines. The window takes a 28mm double glazed



unit as standard and is available in either ovolo or putty profiles, finishes can be any opaque to match a RAL code, or translucent stain from the Sikkens range of finishes. The usual bonded bar and glass specification options are available.



## Perform'eco' Bi-folding Door-sets

Bi-Fold doors are now the great way of opening up a space between the home and garden, or the home and a conservatory, to be able to maximize a space in this way is a liberating feeling. To be able to control the use of space from the warmth of winter to the heat of summer for that big family get together to that wow factor barbecue, you can have it all with this contemporary or traditional design tailor-made for your own personal space. Perform'eco' Bi-folding door-sets are 64mm thick and take 28mm double glazed units as standard, available in either ovolo or putty profiles and any opaque finish to match a RAL code, or a translucent stain from the Sikkens range of finishes.

## Security Testing at Maco (uk)

Perform'eco' has commenced a programme of product testing to develop the products towards meeting the standards required by Secure by Design.

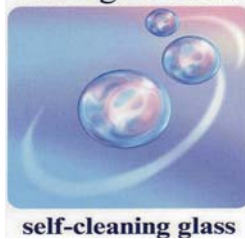
The Initial test results of the standard product offering were extremely encouraging with a high level of security being obtained from the standard Maco R.A.I.L. lock system. With only minor improvements Perform'eco' are confident of meeting the standards required to achieve consistent results during testing to BS7950 without the need to radically change the locking system.



## Perform'eco' recommends Pilkington Activ for Conservatory Roofs –

available in clear or blue, the solar control blue glass helps keep internal temperatures cool whilst still maintaining excellent light transmittance, Self cleaning using UV light and rain to actively break down dirt so the glass stays cleaner longer, heat reflecting low emissivity glass has been developed for the inside of the pane to reflect heat back into the room, toughened to BS6206 Class A.

## Pilkington Activ™



# Perform'eco' Projects

**BARRATT**  
Britain's Premier House Builder  
www.barratthomes.co.uk

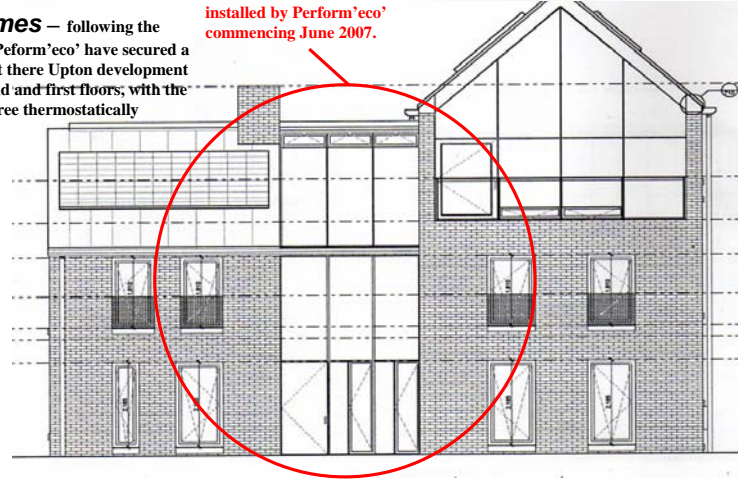
**DAVID WILSON HOMES**



Little details. **Big difference.**

**14 units completed for Barratt's assists Perform'eco' in securing contract with David Wilson Homes** – following the successful completion of 14 units for Barratt's at Leamington Spa, Perform'eco' have secured a project following the Merger of Barratt and David Wilson Homes at there Upton development in Northampton, for 6no. Solar Spaces with screens spanning ground and first floors, with the glazed roofs pitched to line with the zinc roofing accommodating three thermostatically controlled roof vents with rain sensors.

Six Solar Spaces to be manufactured and installed by Perform'eco' commencing June 2007.



**Higgins**

**Eight units Completed for Higgins in 4 weeks**

At there Apple Tree Farm development in Crawley, the eight conservatories were corner units with parapet walls dividing them, the show house has created a lot of interest from potential purchasers wishing to have conservatories on plots currently without any, Perform'eco' have been working with the sales office to try accommodate these requests assisting Higgins in selling Homes.



**OSBORNE DEVELOPMENTS**

**Lantern installed in this spectacular imposing new home for Osborne Developments at Hunters Dell, Sunningdale** – the lantern features electronically controlled roof vents, manufactured in hardwood and fully finished white, orangeries are becoming more and more popular making the room light and airy without being completely surrounded by glass, and therefore more comfortable for using all year round.



**Perform'eco' secures order for six conservatories and 12 plots of windows and doors**



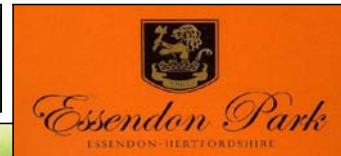
Following the successful completion of the conservatory at Millgate Homes development in fashionable Beaconsfield, on a 5-bedroomed individually appointed family room, Millgate Homes were so impressed with the service and quality of the product supplied they awarded the contract for six conservatories and 12 plots of windows and doors, for the Courtyard at there prestigious development at Essendon Park. The windows and conservatories will be based on the Classic range featuring 24mm bonded bars and fully finished in RAL 9010, the complete project is supply and install and includes cavity closers, manufacture is already under way with first deliveries and installation commencing in May 2007.

**Orangery for 6,600 sq. ft six bedroom detached home in Chelsfield Park, Orpington Kent.**



*Berwood Homes Ltd.*

Berwood Homes commissioned perform'eco' to produce the orangery for this magnificent home with accommodation set over three floors, Berwood Homes next development is a property of 12,000 sq. ft to include an orangery and swimming pool in the basement.



**Perform'eco'**  
The performance eco joinery solution

Unit J1, Mendip Business Park, Rooksbridge, Axbridge, Somerset BS26 2UG  
Tel: 01934 751065 Fax: 01934 750016 email: enquiries@performeco.co.uk